

Space Details

Key:	IDEPLUGIN
Name:	Atlassian IDE Connector
Description:	Documentation for the Atlassian IntelliJ Connector and the Atlassian Eclipse Connector
Creator (Creation Date):	smaddox (Mar 21, 2008)
Last Modifier (Mod. Date):	smaddox (Sep 17, 2008)

Available Pages

- Atlassian Eclipse Connector
 - License and Copyright for the Atlassian Eclipse Connector
 - Installing the Atlassian Eclipse Connector
 - Upgrading the Atlassian Eclipse Connector
 - User Guide for the Atlassian Eclipse Connector
 - Configuring the Atlassian Eclipse Connector
 - Using Bamboo in the Eclipse Connector
 - Atlassian Eclipse Connector Release Notes
 - Atlassian IDE Plugin 0.4 for Eclipse - Release Notes
 - Atlassian IDE Plugin 0.3 for Eclipse - Release Notes
 - Atlassian IDE Plugin 0.2 for Eclipse - Release Notes
 - Atlassian IDE Plugin 0.2 for Eclipse - Upgrade Notes
 - Atlassian IDE Plugin 0.1 for Eclipse - Release Notes

Atlassian Eclipse Connector

This page last changed on Mar 11, 2009 by [smaddox](#).

New name: Atlassian Eclipse Connector

We are changing the name of the Atlassian IDE Plugin for Eclipse to the 'Atlassian Eclipse Connector'. The new name does not imply any changes to your IDE plugin/connector, except for the improvements announced in our [regular releases](#). We want a snappy name that better expresses the functionality of the connector.



Eclipse Connector Documentation	Resources	
<ul style="list-style-type: none">Installation GuideUpgrade GuideUser GuideRelease Notes	<p>If you encounter a problem using the Atlassian Eclipse Connector, please contact our support team.</p> <p>This is an open source project. To access the connector's source code, point your SVN at: https://studio.atlassian.com/svn/PLE/trunk. (If you don't already have an account, please go to http://studio.atlassian.com and sign up for an account. You should then be able to access the svn repository with your new account.)</p> <p>Other handy links:</p> <ul style="list-style-type: none">JavadocJIRA Issue TrackerAtlassian IDE Connector Forum	
About the Atlassian Eclipse Connector		
<p>The Atlassian Eclipse Connector is an Eclipse plugin. It allows you to work with the Atlassian products within your Eclipse IDE. Now you don't have to switch between websites, email messages and news feeds to see what's happening to your project and your code. Instead, you can see the relevant information right there in your development environment. The current version of the Atlassian Eclipse Connector integrates Bamboo build information into Eclipse.</p> <div style="background-color: #e0ffe0; padding: 5px;"><p> We are actively developing the Eclipse Connector If you'd like stay informed, enter your email address on this web page and we'll send you an update when the Eclipse Connector is available.</p></div> <div style="background-color: #e0e0ff; padding: 5px;"><p> Current released version: The Atlassian IDE Plugin for Eclipse version 0.4 has now been released — see the Atlassian IDE Plugin 0.4 for Eclipse - Release Notes.</p></div>	<th>Offline Versions of the Documentation</th>	Offline Versions of the Documentation
	<p>You can download the Atlassian Eclipse Connector documentation in PDF, HTML or XML formats.</p>	
	Looking for Other Plugins?	
	<p>If you're in the wrong place, try these links instead:</p> <ul style="list-style-type: none">Atlassian Connector for IntelliJ IDEA — see Atlassian IntelliJ ConnectorClover IDE plugins — see the Clover documentationPlugins for Atlassian products — see plugin information for Confluence, JIRA, Crowd, BambooResources for plugin developers — see Atlassian Developer Network	

Table of Contents

- [License and Copyright for the Atlassian Eclipse Connector](#)
- [Installing the Atlassian Eclipse Connector](#)
- [Upgrading the Atlassian Eclipse Connector](#)
- [User Guide for the Atlassian Eclipse Connector](#)
 - [Configuring the Atlassian Eclipse Connector](#)
 - [Using Bamboo in the Eclipse Connector](#)
- [Atlassian Eclipse Connector Release Notes](#)
 - [Atlassian IDE Plugin 0.4 for Eclipse - Release Notes](#)
 - [Atlassian IDE Plugin 0.3 for Eclipse - Release Notes](#)
 - [Atlassian IDE Plugin 0.2 for Eclipse - Release Notes](#)
 - [Atlassian IDE Plugin 0.2 for Eclipse - Upgrade Notes](#)
 - [Atlassian IDE Plugin 0.1 for Eclipse - Release Notes](#)

License and Copyright for the Atlassian Eclipse Connector

This page last changed on Mar 11, 2009 by [smaddox](#).

Open Source

This is an open source project. You can get the source code from [our SVN repository](#).

Copyright Statement

© Atlassian 2008

License

Licensed under the Eclipse Public License, Version 1.0 (the "License").

You may not use this file except in compliance with the License.

You may obtain a copy of the License at

<http://www.eclipse.org/legal/epl-v10.html>

Unless required by applicable law or agreed to in writing, software distributed under the License is distributed on an "AS IS" BASIS, WITHOUT WARRANTIES OR CONDITIONS OF ANY KIND, either express or implied.

See the License for the specific language governing permissions and limitations under the License.

Installing the Atlassian Eclipse Connector

This page last changed on Sep 18, 2008 by [smaddox](#).

New name: Atlassian Eclipse Connector

We are changing the name of the Atlassian IDE Plugin for Eclipse to the 'Atlassian Eclipse Connector'. The new name does not imply any changes to your IDE plugin/connector, except for the improvements announced in our [regular releases](#). We want a snappy name that better expresses the functionality of the connector.

On this page:

- [System Requirements](#)
- [Installation in Short](#)
- [Installation in Detail](#)

System Requirements

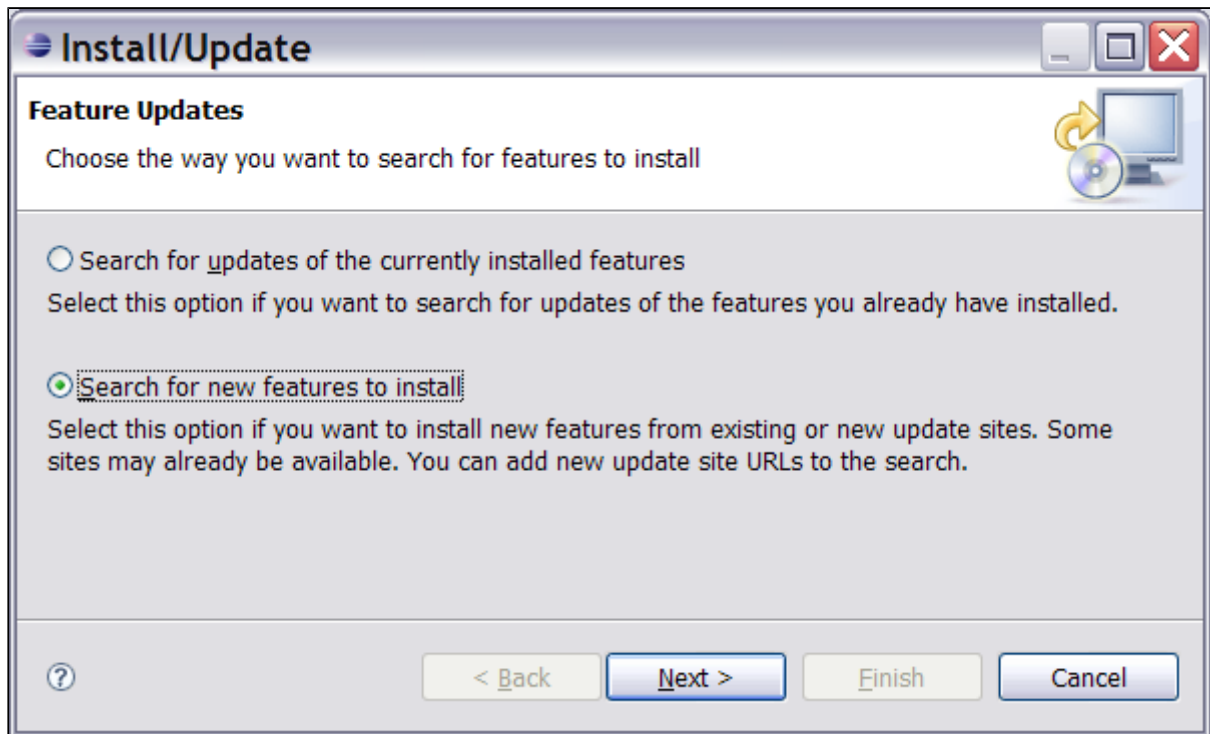
	IDE Plugin for Eclipse 0.1, 0.2	IDE Plugin for Eclipse 0.3, 0.4	Atlassian Eclipse Connector 0.5 or later
Eclipse	3.3 (Europa) or later	3.4 (Ganymede) or later	3.4 (Ganymede) or later
Bamboo	1.x 2.x recommended	1.x 2.x recommended	1.x 2.x recommended

Installation in Short

Add <http://update.atlassian.com/atlassian-eclipse-plugin> to your Eclipse update sites and then install the plugin.

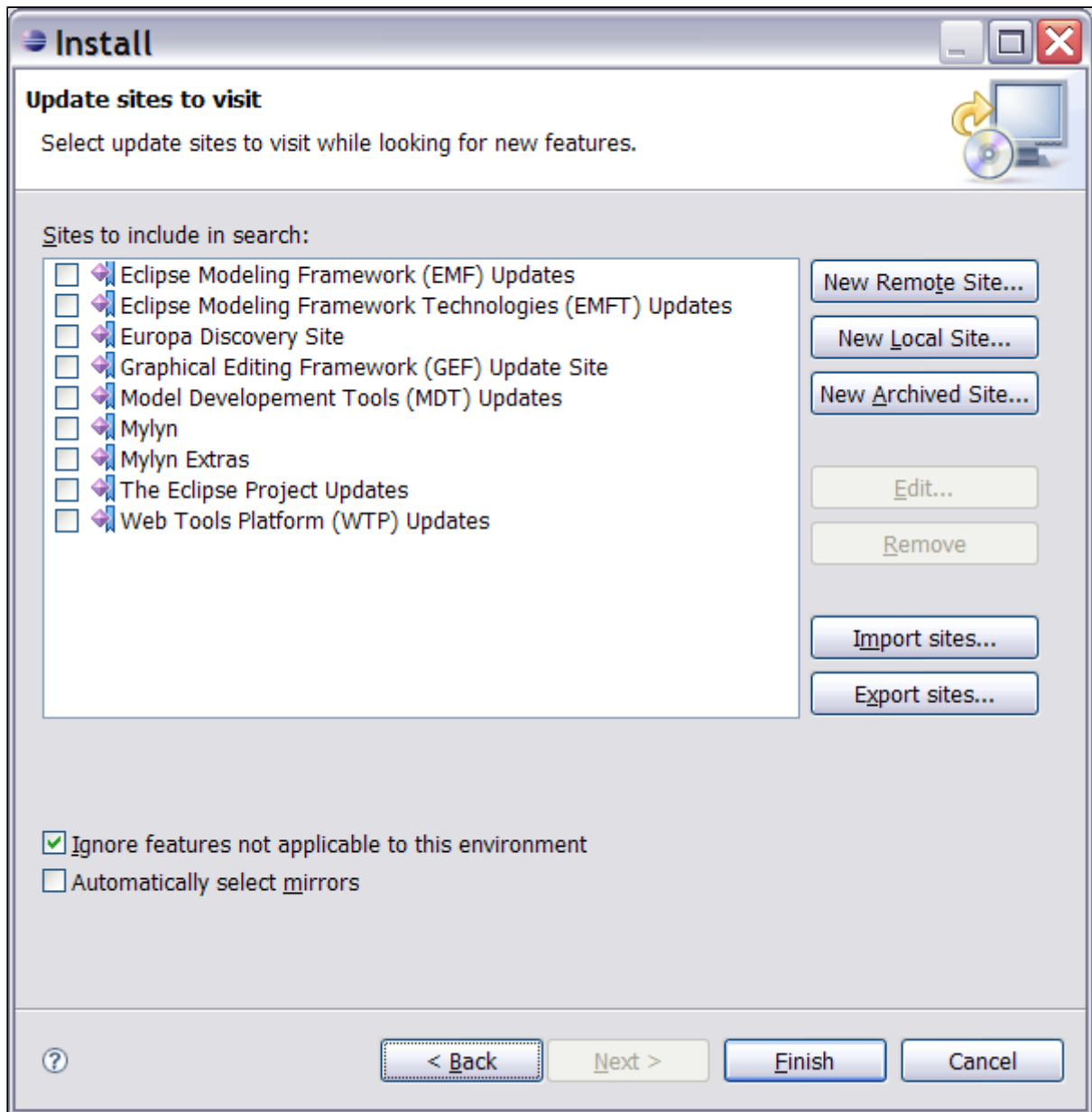
Installation in Detail

1. Open the Eclipse software updates manager via 'Help', 'Software Updates', 'Find and Install'.
2. The 'Feature Updates' screen will appear, as shown in the screenshot below:



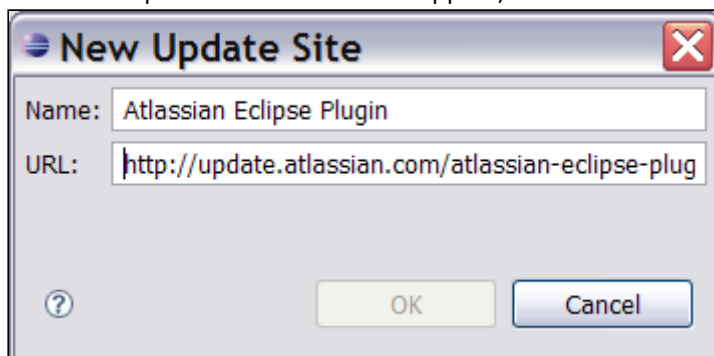
Select 'Search for new features to install' and click 'Next'.

3. The 'Update sites to visit' screen will appear, as shown in the screenshot below:



Click the 'New Remote Site' button.

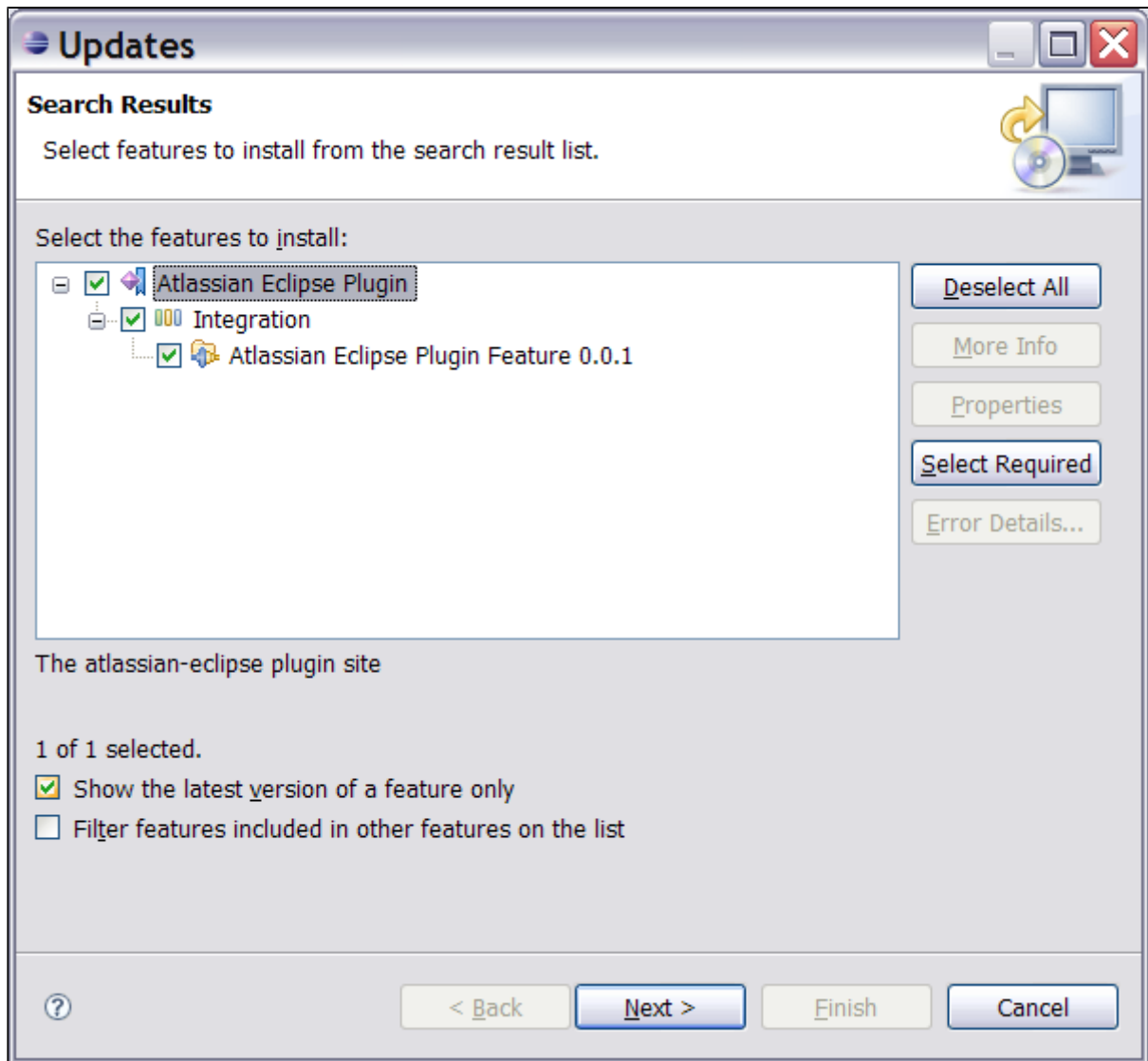
4. The 'New Update Site' screen will appear, as shown in the screenshot below:



Enter the following information:

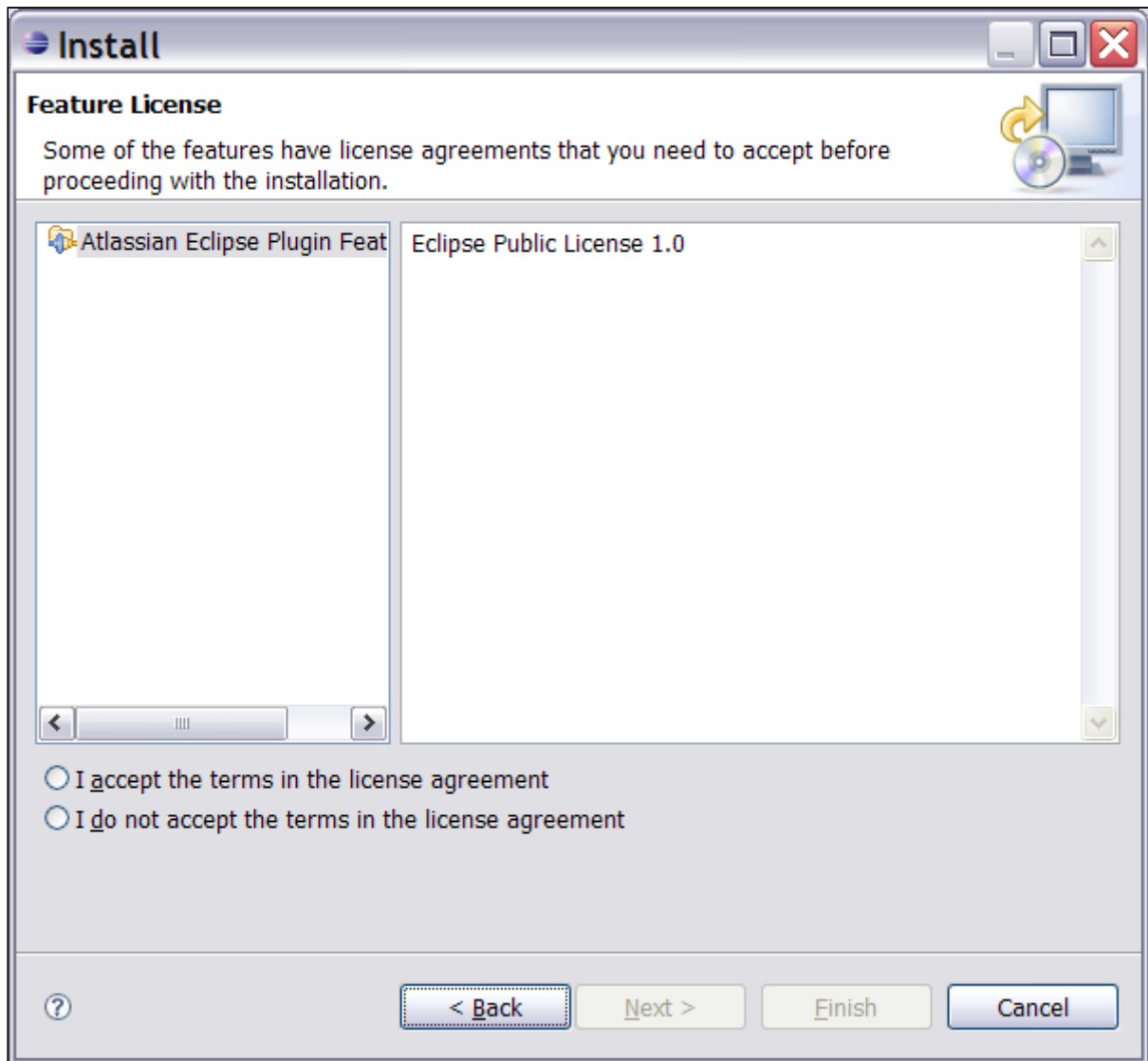
- Name — Atlassian Eclipse Plugin
- URL — <http://update.atlassian.com/atlassian-eclipse-plugin/>
Click 'OK'.

5. The 'Search Results' screen will appear with 'Atlassian Eclipse Plugin' in the list, as shown in the screenshot below:



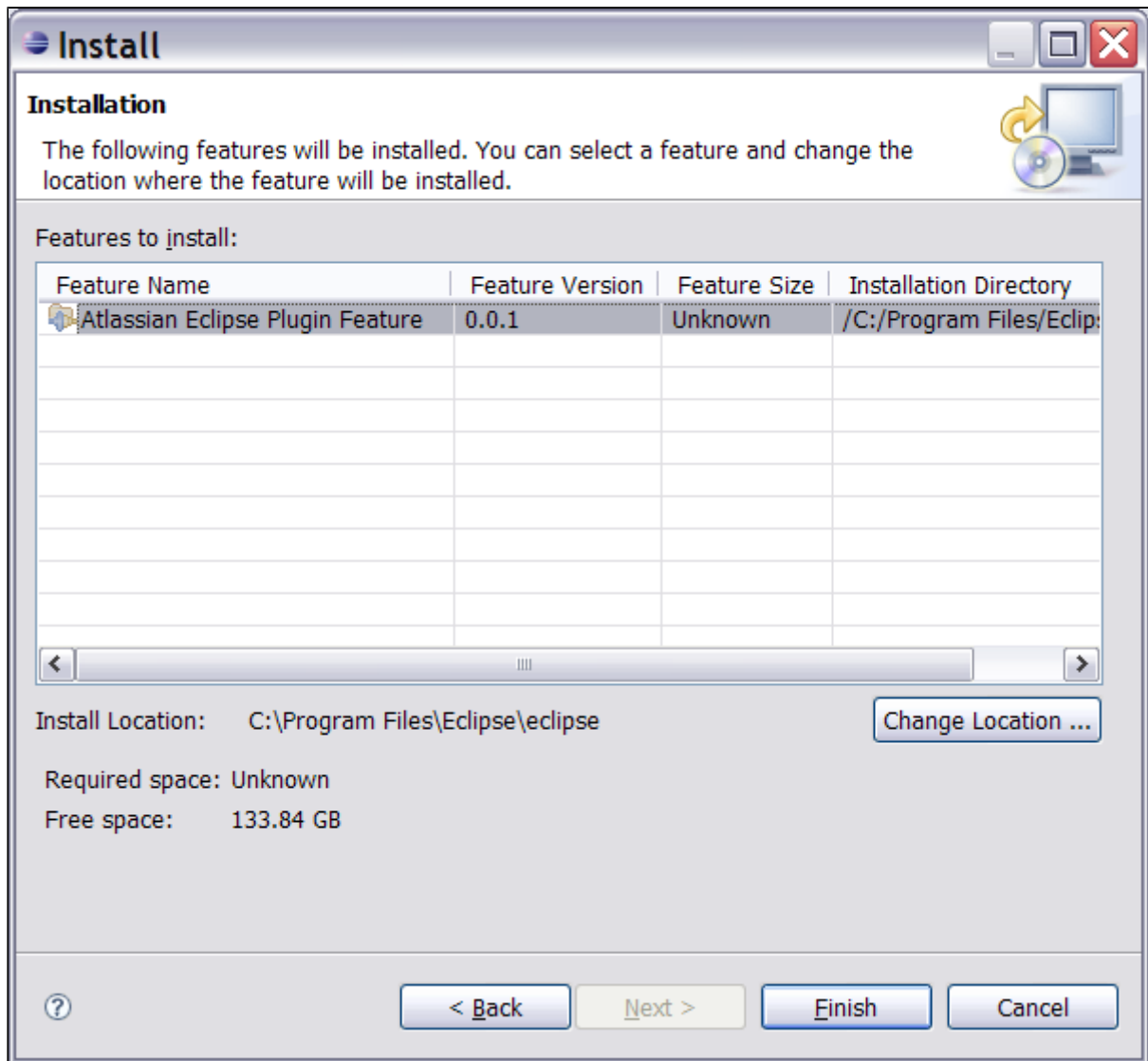
Put a tick in the checkbox next to 'Atlassian Eclipse Plugin', to select all features for installation. Click the 'Next' button.

6. The 'Feature License' screen will appear as shown in the screenshot below:



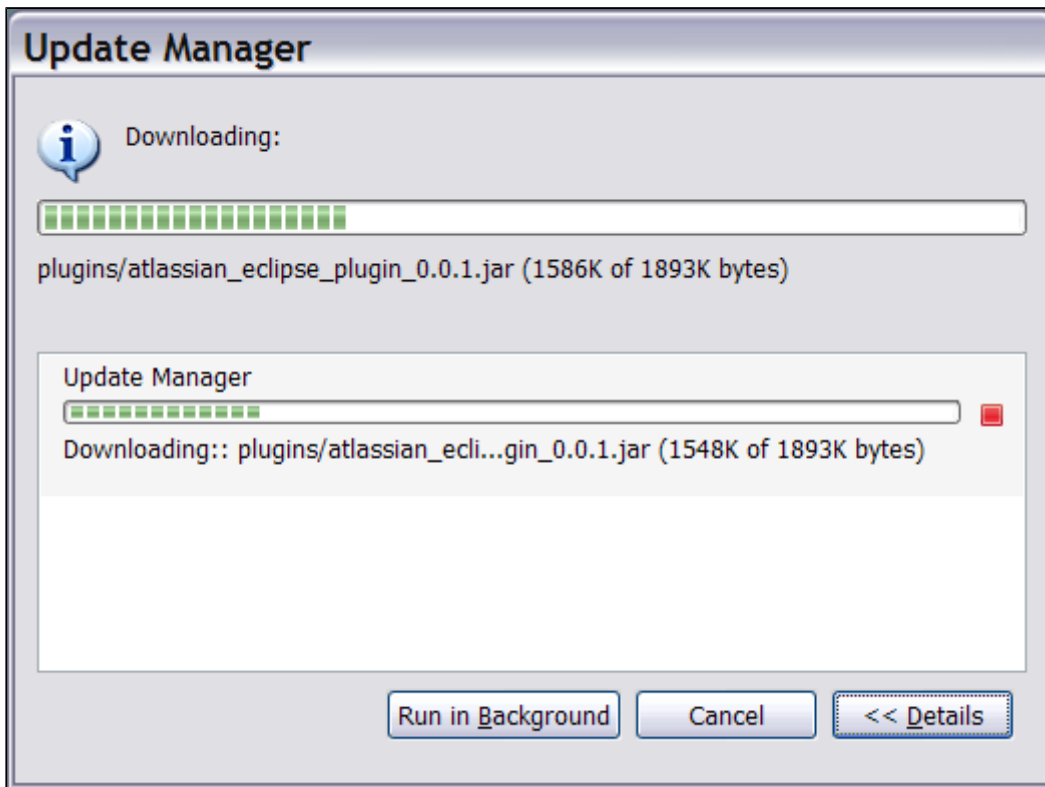
Accept the license agreement and click the 'Next' button.

7. The 'Installation' screen will appear, as shown in the screenshot below:

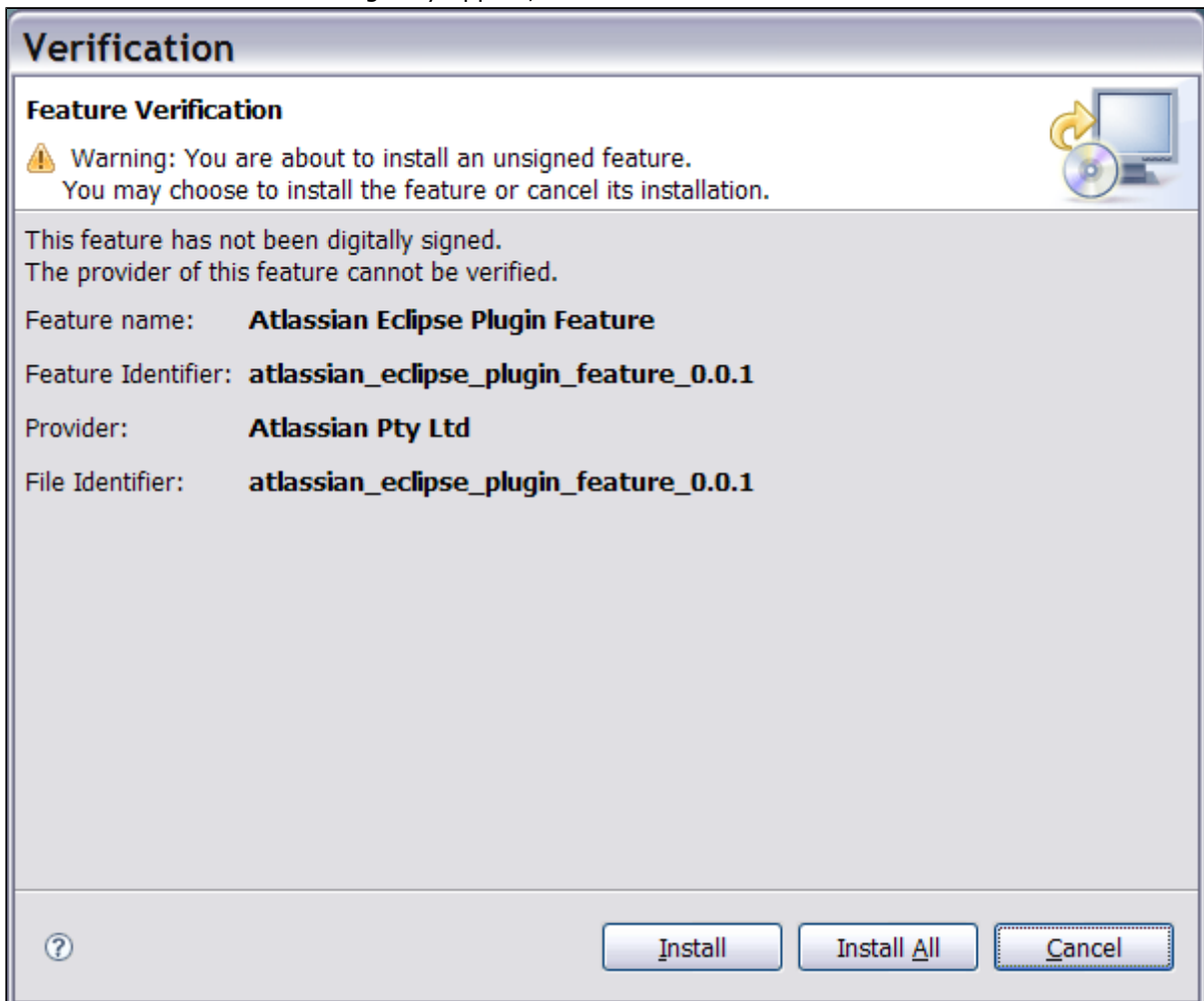


Verify the installation details, including the location where you want the plugin to be installed. Click the 'Finish' button.

8. Now you will see the progress of the update, something like this:

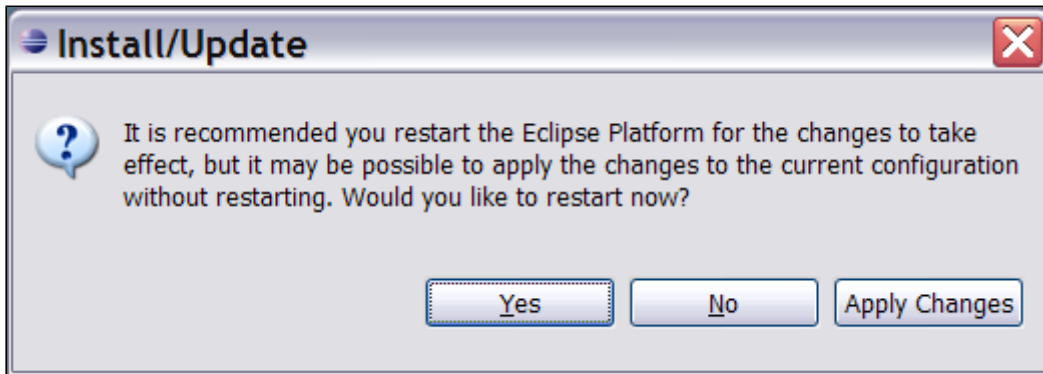


9. A 'Feature Verification' warning may appear, as shown in the screenshot below:



This is because the plugin download is not signed via a digital certificate. Click the 'Install' button to accept the unsigned feature.

10. When the download has finished you will be offered the chance to restart Eclipse, as shown in the screenshot below:



Click 'Yes' to close Eclipse. Start Eclipse again to activate the plugin.

RELATED TOPICS

- [Configuring the Atlassian Eclipse Connector](#)
- [Overview of the Atlassian IDE Connector](#)

Upgrading the Atlassian Eclipse Connector

This page last changed on Sep 17, 2008 by [smaddox](#).

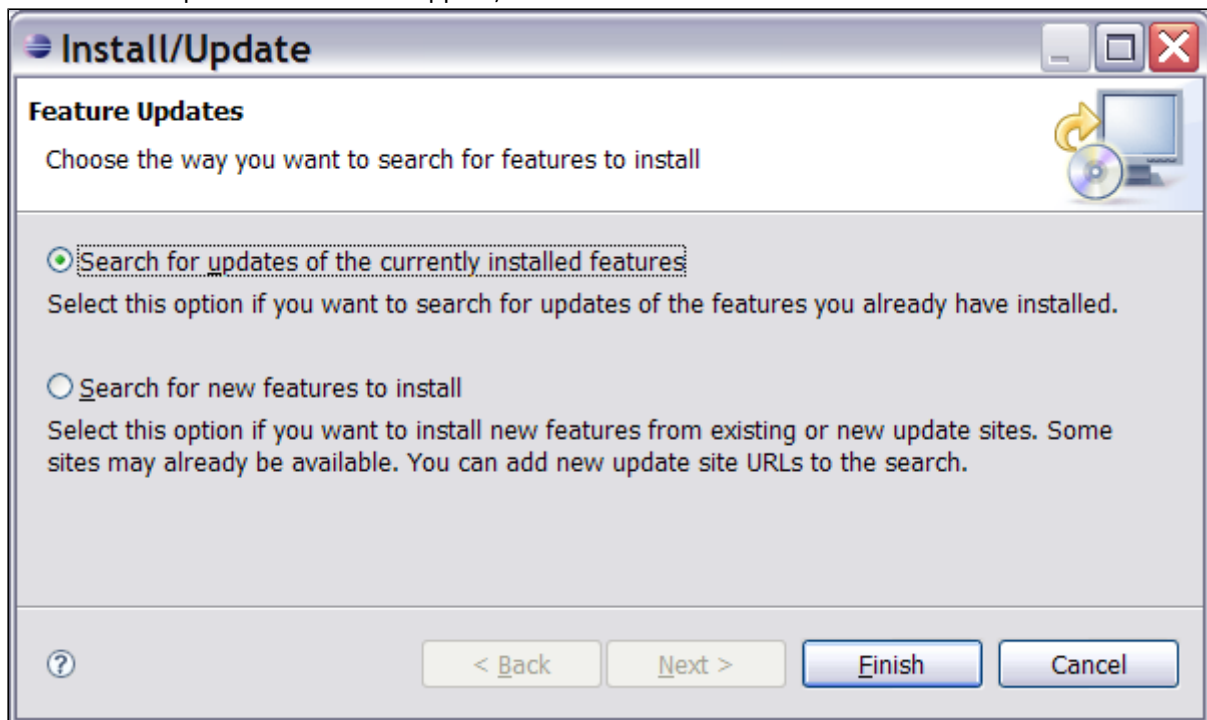
New name: Atlassian Eclipse Connector

We are changing the name of the Atlassian IDE Plugin for Eclipse to the 'Atlassian Eclipse Connector'. The new name does not imply any changes to your IDE plugin/connector, except for the improvements announced in our [regular releases](#). We want a snappy name that better expresses the functionality of the connector.

This page tells you how to upgrade the Atlassian IDE Plugin for Eclipse. If you have never installed the plugin, please refer to the [installation guide](#) instead.

To upgrade the Atlassian IDE Plugin in Eclipse:

1. Open the Eclipse software updates manager via 'Help', 'Software Updates', 'Find and Install'.
2. The 'Feature Updates' screen will appear, as shown in the screenshot below:



Select 'Search for updates of the currently installed features' and click 'Finish'.

3. The 'Update Site Mirrors' screen may appear. Select the appropriate mirror site for your geographical location.
4. The 'Search Results' screen will appear with 'Atlassian Eclipse Plugin' in the list. Select all features for installation and click the 'Next' button.
5. The 'Feature License' screen will appear. Accept the license agreement and click the 'Next' button.
6. The 'Installation' screen will appear. Verify the installation details, including the location where you want the plugin to be installed. Click the 'Finish' button.
7. A 'Feature Verification' warning may appear. This is because the plugin download is not signed via a digital certificate. Click the 'Install' button to accept the unsigned feature.
8. When the download has finished you will be offered the chance to restart Eclipse. Click 'Yes' to close Eclipse. Start Eclipse again to activate the new version of the plugin.

RELATED TOPICS

[Installing the Atlassian Eclipse Connector](#)
[Configuring the Atlassian Eclipse Connector](#)
[User Guide for the Atlassian Eclipse Connector](#)

User Guide for the Atlassian Eclipse Connector

This page last changed on Jan 22, 2009 by [rkrishna](#).

New name: Atlassian Eclipse Connector

We are changing the name of the Atlassian IDE Plugin for Eclipse to the 'Atlassian Eclipse Connector'. The new name does not imply any changes to your IDE plugin/connector, except for the improvements announced in our [regular releases](#). We want a snappy name that better expresses the functionality of the connector.

Table of Contents

- [Configuring the Atlassian Eclipse Connector](#)
- [Using Bamboo in the Eclipse Connector](#)

RELATED TOPICS

[Installing the Atlassian Eclipse Connector](#)

Configuring the Atlassian Eclipse Connector

This page last changed on Sep 17, 2008 by [smaddox](#).

New name: Atlassian Eclipse Connector

We are changing the name of the Atlassian IDE Plugin for Eclipse to the 'Atlassian Eclipse Connector'. The new name does not imply any changes to your IDE plugin/connector, except for the improvements announced in our [regular releases](#). We want a snappy name that better expresses the functionality of the connector.

In the Eclipse 'Preferences' window, you can define the Bamboo server that the Atlassian Eclipse Connector connects to and enter the names of the builds you are interested in.

On this page:

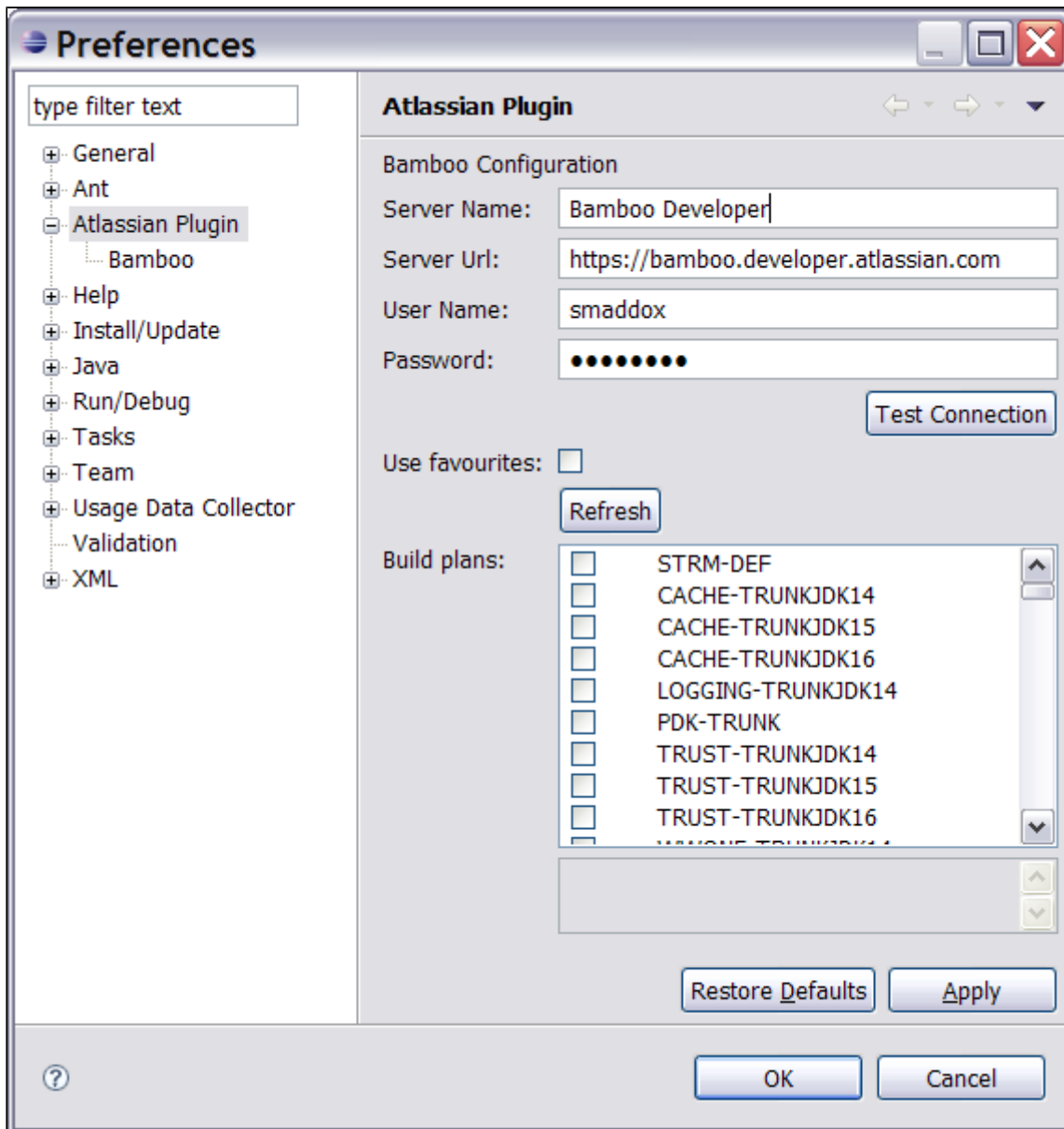
- [Accessing the Connector Preferences Window](#)
- [Configuring your Bamboo Server Connections](#)
- [Configuring Bamboo Polling Time and Popup Options](#)

Accessing the Connector Preferences Window

1. In [Eclipse](#), click the 'Window' menu and select 'Preferences'.
2. Select 'Atlassian Plugin' from the list.
3. The 'Preferences' window will open, as shown in the screenshot below.

Configuring your Bamboo Server Connections

[Screenshot: Configuring your Bamboo server](#)



To configure your server:

1. Enter the server name, server URL, your username and your password.
2. Click the 'Test Connection' button to verify the information you have entered. The connector will attempt to connect to the Bamboo server.
3. Click the 'Refresh' button to retrieve the latest list of build plans from the Bamboo server, based on the server information entered on the screen.
4. Now you can either click 'Use favourites' to select your favourite plans as defined on the Bamboo server, or you can select the plans that you want the connector to watch. Yellow stars indicate your favourite plans as defined on the Bamboo server.
5. Click 'Apply' or 'OK' to save the changes.

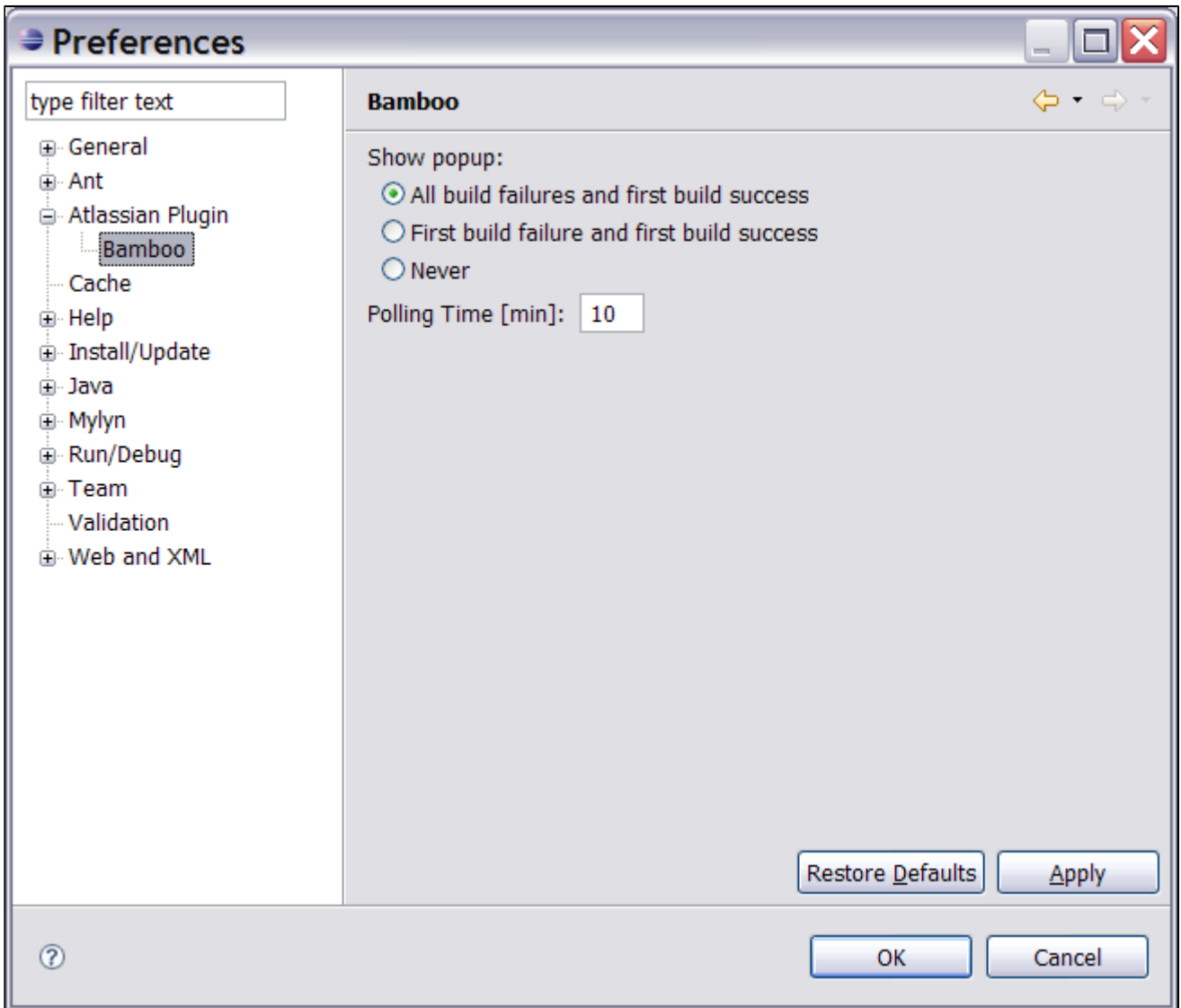
i You can also view a list of Bamboo servers in the 'Bamboo Servers' view, as described in the [User Guide](#).

Configuring Bamboo Polling Time and Popup Options

You can configure the polling interval that the connector will use to monitor Bamboo build plans.

You can also configure if and when the connector will show a popup window.

Screenshot: Configuring polling time



To configure the polling time and popup behaviour:

1. Select the 'Bamboo' option under 'Atlassian Plugin'. The Bamboo Preferences window will open, as shown in the screenshot above.
2. 'Show popup' — Select a radio button to determine when Bamboo will show a popup window.
3. 'Polling Time' — Enter a time interval in minutes. For example, if you enter '30', the connector will connect to your Bamboo server every half hour to refresh its data.

RELATED TOPICS

[Installing the Atlassian Eclipse Connector](#)
[User Guide for the Atlassian Eclipse Connector](#)
[IDE Connector Documentation](#)

Using Bamboo in the Eclipse Connector



This page last changed on Sep 17, 2008 by [smaddox](#).

The Atlassian Eclipse Connector gives you [Bamboo](#) build information right there in your [Eclipse](#) integrated development environment. This page tells you how to use the Bamboo view provided by the Atlassian Eclipse Connector.

On this page:

- [Icon and Popup showing Bamboo Status](#)
- [Accessing the Bamboo Views in Eclipse](#)
- [Contents of the 'Bamboo Watched Plans' View](#)
- [Contents of the 'Bamboo Servers' View](#)
- [Viewing a Build Log in Eclipse](#)

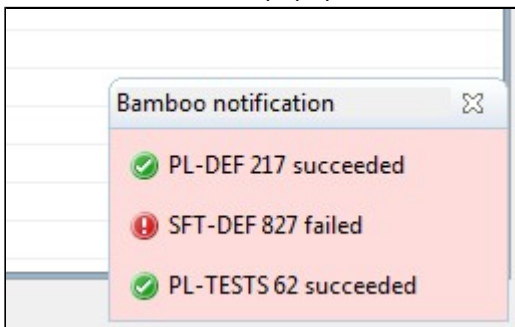
Icon and Popup showing Bamboo Status

After you have defined [the Bamboo servers and plans to monitor](#), an icon in the Eclipse status bar shows the summary status of builds. If at least one build is currently failing, the icon is a red exclamation mark , otherwise it is a green tick .

If the Eclipse Bamboo view is hidden, you can double-click the status icon to open the Bamboo view, where detailed information is shown.

In addition, when the summary status changes (e.g. when a build fails), a popup window appears to warn you of the problem. You can configure the behaviour of the popup in the [Preferences window](#).

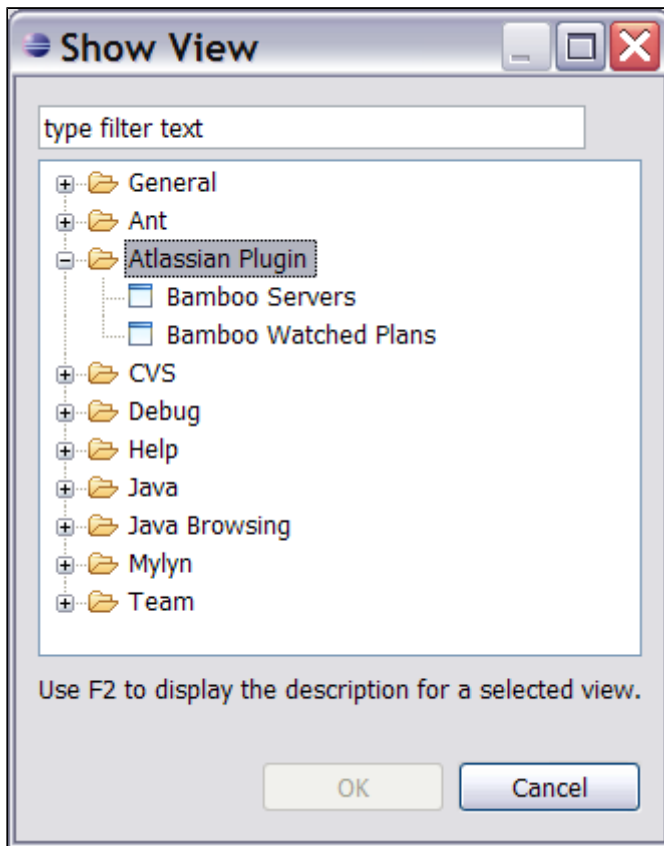
Screenshot: Bamboo popup window



Accessing the Bamboo Views in Eclipse

There are two Bamboo views available: 'Bamboo Servers' and 'Bamboo Watched Plans'.

Screenshot: Accessing the Bamboo views



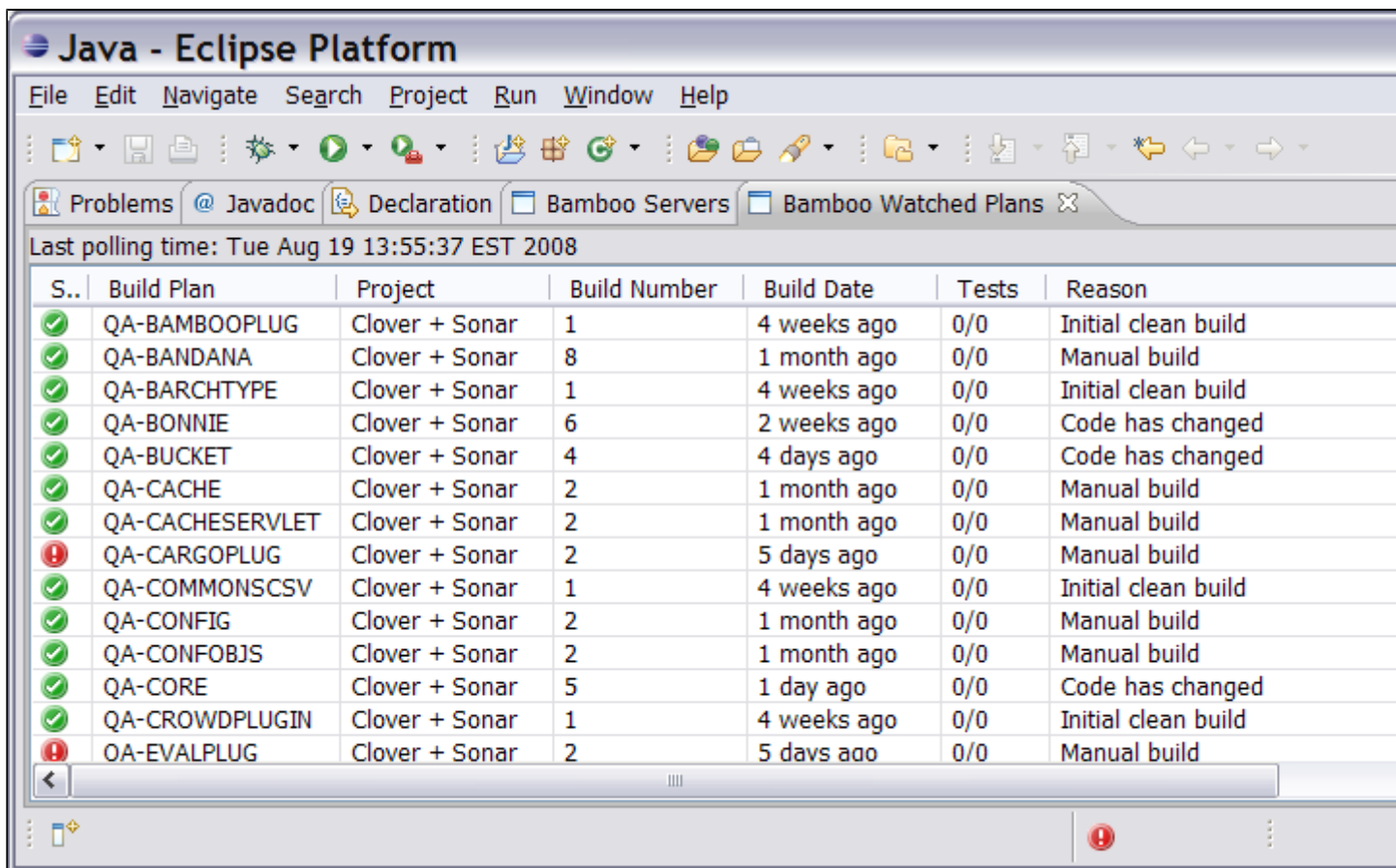
To open the views:

1. In [Eclipse](#), click the 'Window' menu and select 'Show View' then 'Other'.
2. Expand the folder named 'Atlassian Plugin'.
3. Select 'Bamboo Servers' or 'Bamboo Watched Plans'.
Hint: Hold down the Control key to select more than one view at the same time.
4. Click 'OK'.
5. The selected Bamboo view(s) will open, as shown in the screenshots below.

Contents of the 'Bamboo Watched Plans' View

The Bamboo Watched Plans view shows information about all build plans of the server defined in the Preferences window. (See [Configuring the Atlassian Eclipse Connector](#).)

Screenshot: Bamboo Watched Plans



You can change the order of the columns in the view. Just click a column heading and drag it to the new position. The connector will remember the column order the next time you start Eclipse.

You can perform the following functions for each line in the list:

- Double-click a line to open the selected plan in a new browser window.
- Select a line to enable the actions in the tool bar.

The tool bar above the list of plans provides more functionality:

- — Re-run the last build of the selected plan.
- — Label a build.
- — Add a comment to a build.
- — Show the full build log within the Eclipse IDE. (See [below](#).)
- — Refresh the contents of the list by polling the configured Bamboo server.

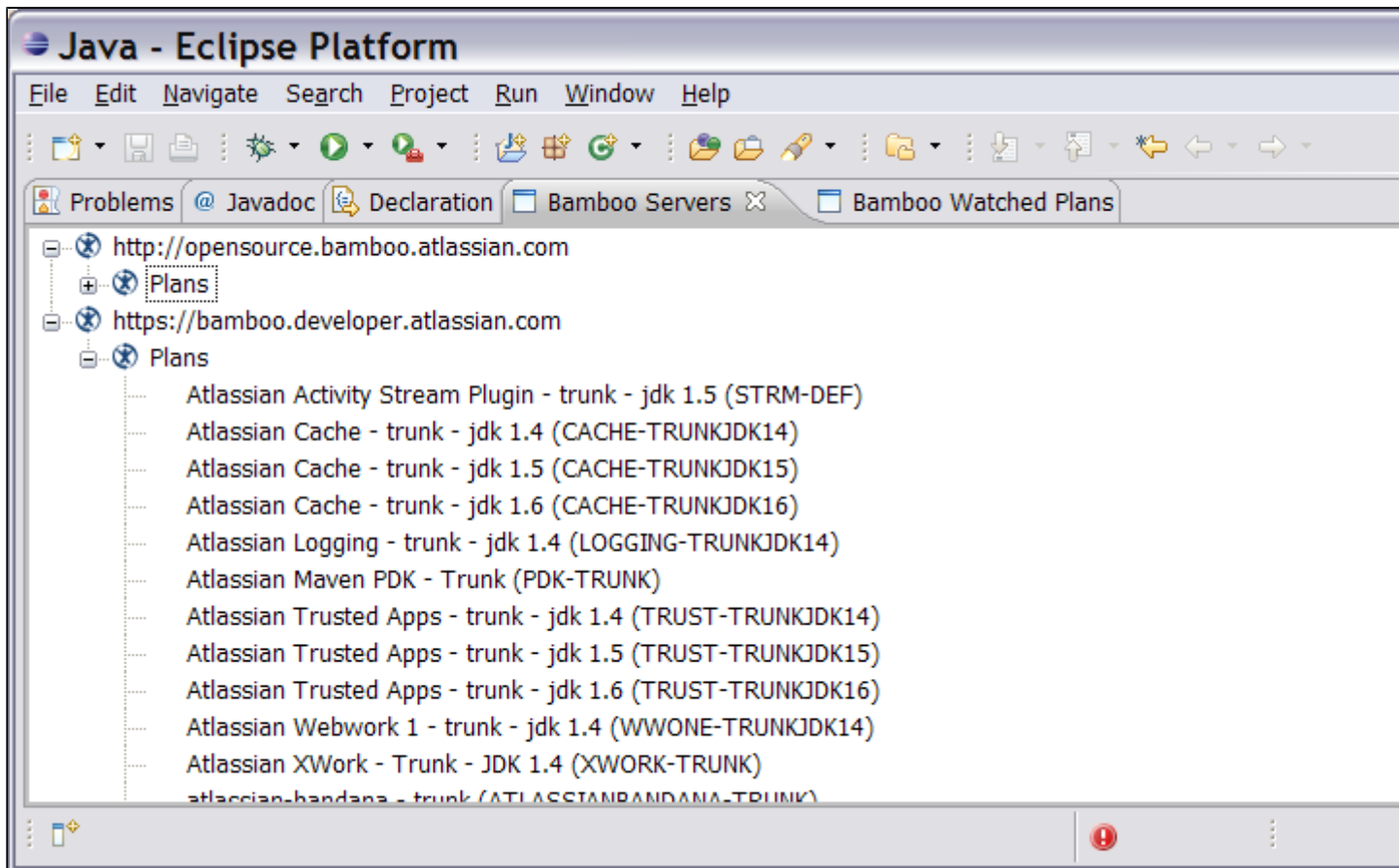
Contents of the 'Bamboo Servers' View

The Bamboo Servers view is not yet fully functional


The Bamboo Servers view is still under development. When complete, this view will replace the server configuration on the connector Preferences window, which is described in [Configuring the Atlassian Eclipse Connector](#). On the Bamboo Servers view described below, you can add servers and browse plans but nothing more.

The Bamboo Servers view shows a list of available Bamboo servers, and allows you to add another server to the list.

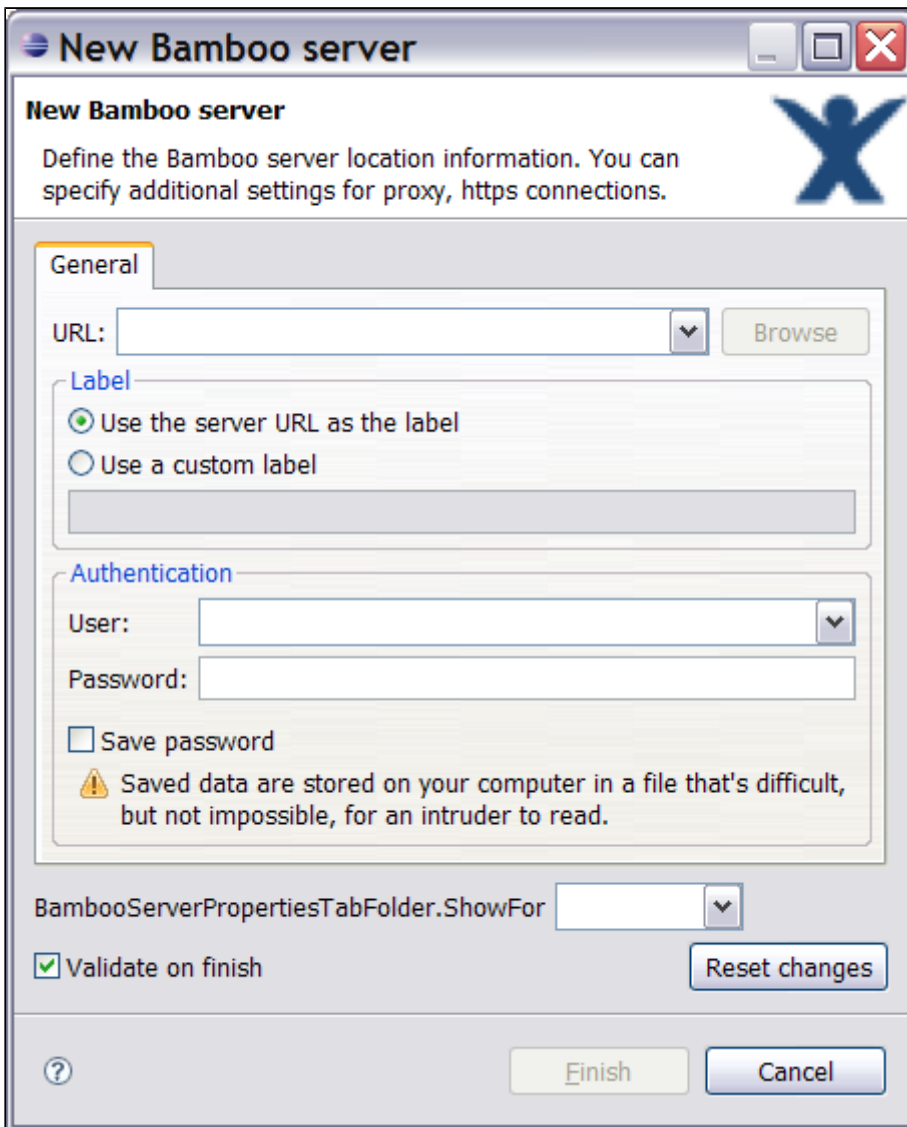
Screenshot: Bamboo Servers



To add a server:


1. Click the New Server icon  in the tool bar above the list of servers.
2. The 'New Bamboo Server' screen will appear, as shown below.
3. Supply the information as prompted then click 'Finish'.

Screenshot: Adding a Bamboo Server



Viewing a Build Log in Eclipse

To show the full build log within the Eclipse IDE:

1. Select the build plan from your list of watched plans. (See [above](#).)
2. Click the 'Show Build Log' icon  in the toolbar.
3. The build log appears, as shown in the screenshot below.

Screenshot: Full build log in Eclipse IDE

Java - Log for build STRM-DEF-12 - Eclipse Platform

File Edit Navigate Search Project Run Window Help

STRM-DEF-12

```

simple 30-Jul-2008 22:11:30 Executing build STRM-DEF-12
simple 30-Jul-2008 22:11:30 Running pre-build action: Build Number Stamper
simple 30-Jul-2008 22:11:30 Running pre-build action: VCS Version Collector
simple 30-Jul-2008 22:11:30 Building started with Maven2Builder
command 30-Jul-2008 22:11:30 Starting to build 'Atlassian Activity Stream Plugin - trunk - jdk 1.5'
build30-Jul-2008 22:11:31 [INFO] Scanning for projects...
build30-Jul-2008 22:11:32 [INFO] Reactor build order:
build30-Jul-2008 22:11:32 [INFO] Activity Stream Plugin Parent
build30-Jul-2008 22:11:32 [INFO] Confluence Activity Stream Plugin
build30-Jul-2008 22:11:32 [INFO] FishEye/Crucible Activity Stream Plugin
build30-Jul-2008 22:11:32 [INFO] JIRA Activity Stream Plugin
build30-Jul-2008 22:11:33 WAGON_VERSION: 1.0-beta-2
build30-Jul-2008 22:11:34 [INFO] -----

```

Problems @ Javadoc Declaration Bamboo Watched Plans Bamboo Servers

Last polling time: Mon Aug 04 09:53:59 EST 2008

S..	Build Plan	Project	Build Number	Build Date	Tests	Reason	Server
✓	STRM-DEF	Atlassian Acti...	12	4 days ago	63/63	Code has ch...	Bamboo
✓	CACHE-T...	Atlassian Cac...	20	1 month ago	19/19	Manual build	Bamboo
✓	CACHE-T...	Atlassian Cac...	11	1 month ago	19/19	Dependency ...	Bamboo

RELATED TOPICS

- [Installing the Atlassian Eclipse Connector](#)
- [Configuring the Atlassian Eclipse Connector](#)
- [User Guide for the Atlassian Eclipse Connector](#)

Atlassian Eclipse Connector Release Notes

This page last changed on Sep 17, 2008 by [smaddox](#).

New name: Atlassian Eclipse Connector

We are changing the name of the Atlassian IDE Plugin for Eclipse to the 'Atlassian Eclipse Connector'. The new name does not imply any changes to your IDE plugin/connector, except for the improvements announced in our [regular releases](#). We want a snappy name that better expresses the functionality of the connector.



Current released version:

The Atlassian IDE Plugin for Eclipse version 0.4 has now been released — see the [Atlassian IDE Plugin 0.4 for Eclipse - Release Notes](#).

- [Atlassian IDE Plugin 0.4 for Eclipse - Release Notes](#)
- [Atlassian IDE Plugin 0.3 for Eclipse - Release Notes](#)
- [Atlassian IDE Plugin 0.2 for Eclipse - Release Notes](#)
- [Atlassian IDE Plugin 0.1 for Eclipse - Release Notes](#)

Atlassian IDE Plugin 0.4 for Eclipse - Release Notes

This page last changed on Aug 03, 2008 by [smaddox](#).

1 August 2008

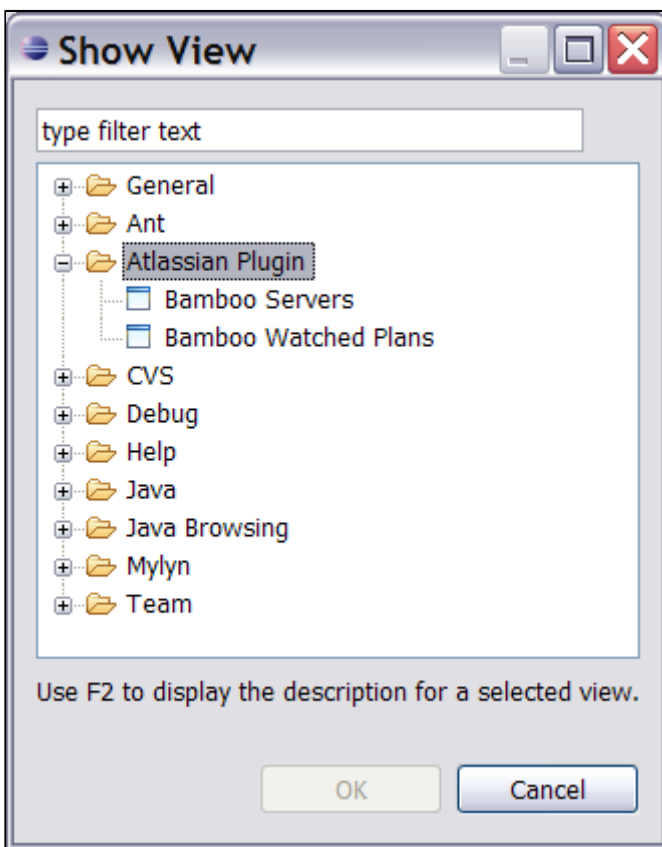
With pleasure, Atlassian presents version 0.4 of the Atlassian IDE Plugin for Eclipse.

This release brings further enhancements to the Bamboo support in the plugin. You can now connect to multiple Bamboo servers instead of just one. For each of your build plans, you can now show the full build log within the Eclipse IDE.

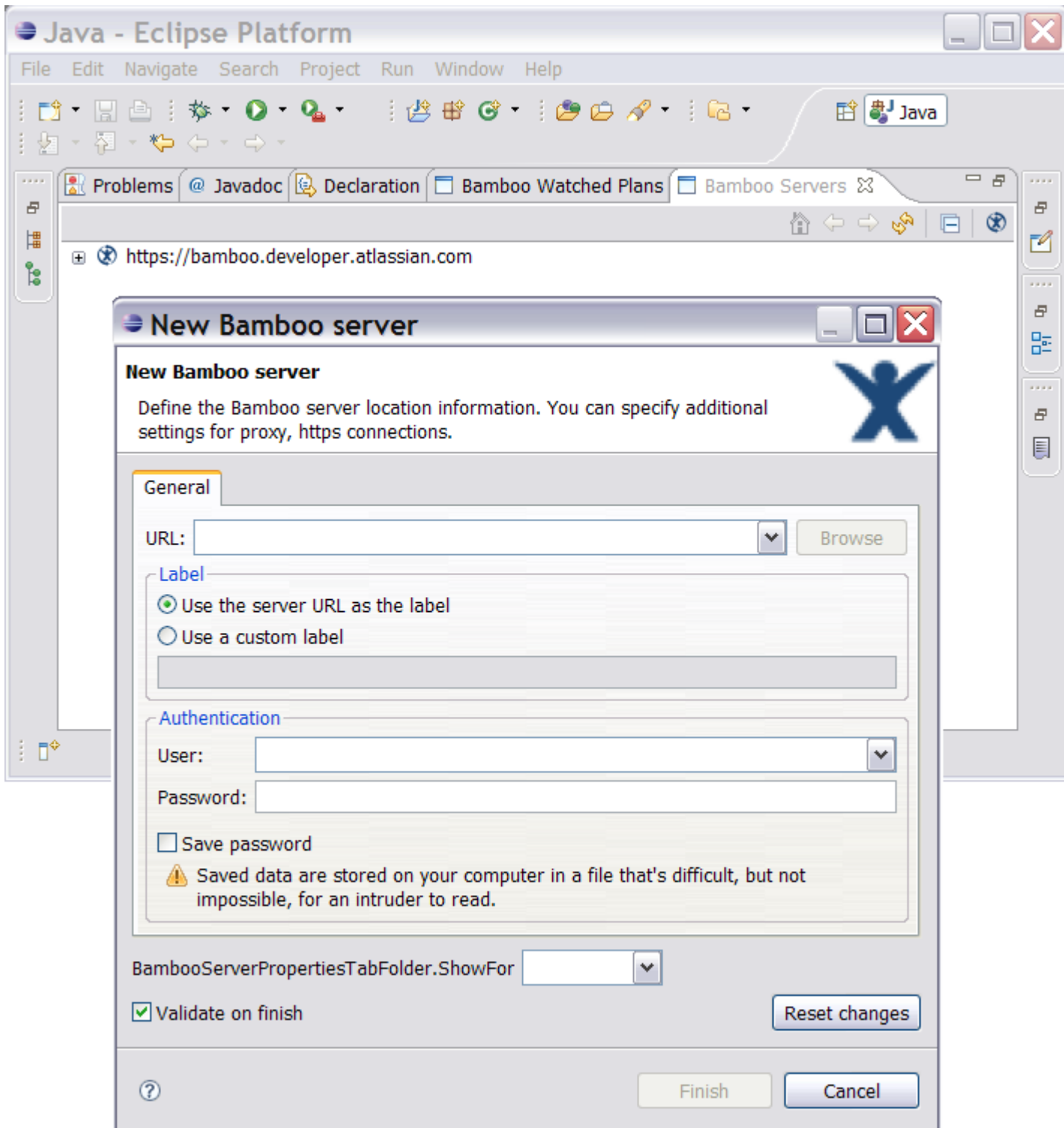
Highlights of this Release

• Bamboo Servers View

- There are now two Bamboo views: 'Bamboo Servers' and 'Bamboo Watched Plans'.

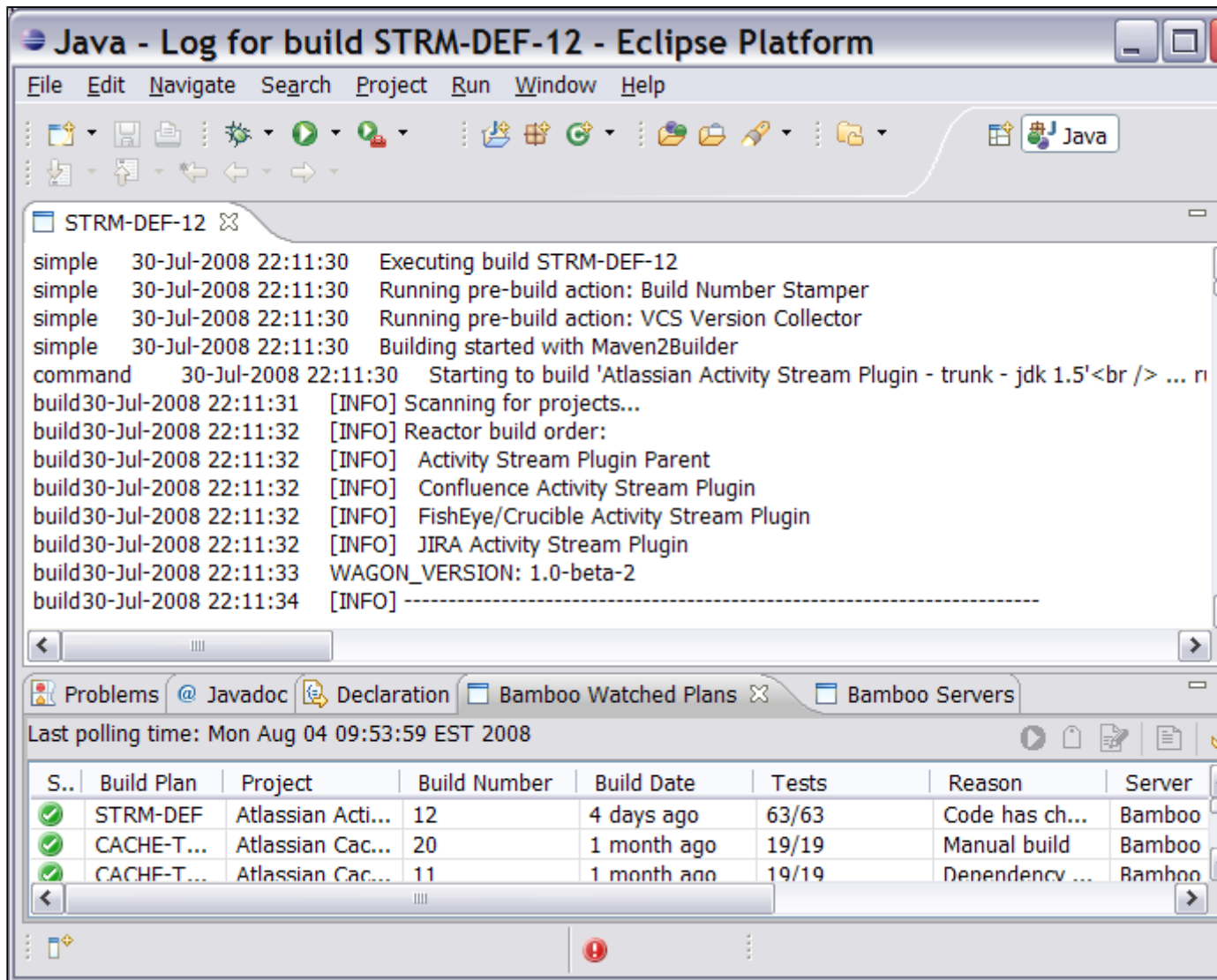


- The 'Bamboo Watched Plans' view shows the information for your selected build plans, as in previous versions of the plugin.
- The new 'Bamboo Servers' view allows you to add Bamboo servers and view the plans defined on each server.
- You can now connect to multiple Bamboo servers instead of just one.



• Full Build Log

- You can now show the full build log within the Eclipse IDE. Just select the build plan, then click the 'Show Build Log' icon in the toolbar.



Complete List of Fixes in the Atlassian IDE Plugin 0.4 for Eclipse

Jira Issues			
Key	Summary	Priority	Status
PLE-51	Add new view to show defined bamboo servers	↑	Resolved
PLE-49	Release notes for Eclipse plugin 0.4	↑	Closed
PLE-45	Show full log for build	↑	Resolved
PLE-40	Several icons in status bar	↑	Resolved

Atlassian IDE Plugin 0.3 for Eclipse - Release Notes

This page last changed on Sep 18, 2008 by [smaddox](#).



Plugin version 0.3 requires Eclipse 3.4

Update on 25/7/2008: From version 0.3 of the Atlassian IDE Plugin, you will need Eclipse version 3.4.0 or later. For more information, see [PLE-46](#).

18 July 2008

With pleasure, Atlassian presents version 0.3 of the Atlassian IDE Plugin for Eclipse. Here are the highlights of this release:

- A new Bamboo icon in the Eclipse status bar shows the summary status of builds: red means at least one build is currently failing; green means all builds are passing.
- The configuration screen allows you to select your favourite build plans as defined on the Bamboo server.
- You can now add labels and comments to your build plans (Bamboo 2 only).
Below is a list of all the fixes and improvements in this release.

The Atlassian IDE Plugin is available for IDEA too

Take a look at the [release notes](#) for the IDEA version of the plugin.

Don't have the Atlassian IDE Plugin for Eclipse yet?

Take a look at the features in the [Plugin User Guide](#). Then follow our easy [installation instructions](#).

This is an open source project. You can get the source code from [our SVN repository](#).

The plugin's blog

From time to time, the plugin development team posts some information on the plugin's [blog](#).

Complete List of Fixes in the Atlassian IDE Plugin 0.3 for Eclipse

Jira Issues			
Key	Summary	Priority	Status
PLE-39	Add status bar notification icon	↑	Resolved
PLE-38	Documentation for Eclipse plugin 0.3	↑	Resolved
PLE-23	"favourite plans" handling in the config dialog	↑	Resolved
PLE-22	Please update teh IDE plugin web page (WAC/software/ideplugin) to reflect the availability of an Eclipse version	↑	Closed
PLE-16	Show license text when installing plug-in	↑	Resolved
PLE-9	Enable label and comment features for bamboo2	↑	Resolved
PLE-34	License text incomplete during installation on Eclipse 3.4	↓	Resolved
PLE-32	Bamboo tab does not display project name and server name	↓	Resolved

Atlassian IDE Plugin 0.2 for Eclipse - Release Notes

This page last changed on Sep 18, 2008 by [smaddox](#).

3 July 2008

With pleasure, Atlassian presents version 0.2 of the Atlassian IDE Plugin for Eclipse.

Here are the highlights of this release:

- The configuration screen allows you to select your Bamboo build plans from a list, rather than typing them into a text box.
- The new 'Test Connection' button lets you verify the connection data you have entered, by connecting to the Bamboo server.
- The new 'Refresh' button lets you retrieve the list of build plans, using the most recent data entered into the form.
- A notification in the Eclipse status bar lets you know the status of background plugin activities, such as retrieving the list of plans or the build status.

Below is a list of all the fixes and improvements in this release.

The Atlassian IDE Plugin is available for IDEA too

Take a look at the [release notes](#) for the IDEA version of the plugin.

Don't have the Atlassian IDE Plugin for Eclipse yet?






Take a look at the features in the [Plugin User Guide](#). Then follow our easy [installation instructions](#).

This is an open source project. You can get the source code from [our SVN repository](#).

The plugin's blog

From time to time, the plugin development team posts some information on the plugin's [blog](#).

Complete List of Fixes in the Atlassian IDE Plugin 0.2 for Eclipse

Jira Issues			
Key	Summary	Priority	Status
PLE-30	Documentation for Eclipse plugin 0.2 ↑		 Resolved
PLE-21	a list of bamboo plans in Eclipse config dialog ↑		 Resolved
PLE-19	Documentation for Eclipse plugin 0.1 ↑		 Closed
PLE-7	Add some notification (animation) that builds' list is reloaded for bamboo tab ↑		 Resolved
PLE-3	Add test connectio button to the config window ↑		 Resolved

Atlassian IDE Plugin 0.2 for Eclipse - Upgrade Notes

This page last changed on Sep 17, 2008 by [smaddox](#).

Below are some essential notes on upgrading to version 0.2 of the Atlassian IDE Plugin for Eclipse. For details of the new features and improvements in this release, please read the [Release Notes](#).

Upgrade Instructions

1. Please upgrade as usual. Instructions are available in the [Upgrade Guide](#).
2. After upgrading, please change the name of your existing configuration file from
`atlassian_eclipse_plugin.prefs`
to
`atlassian-eclipse-plugin.prefs`
(replacing the underscores with hyphens).

Background Information

For the first time in this release, we built the release automatically using Maven with an Ant script. A side effect is that your plugin configuration data will be empty after upgrade. To retrieve the configuration data, change the file name as described above.

RELATED TOPICS

[Atlassian IDE Plugin 0.2 for Eclipse - Release Notes](#)

Atlassian IDE Plugin 0.1 for Eclipse - Release Notes

This page last changed on Sep 18, 2008 by [smaddox](#).

23 June 2008

With pleasure, Atlassian presents version 0.1 of the Atlassian IDE Plugin for Eclipse. Highlights of this release include:

- You can configure the polling interval that the plugin will use to monitor the Bamboo build plans.
- Bamboo will now notify you of build failures and successes via a popup. The popup's behaviour is configurable via the plugin's Preferences window.
- You can change the order of the columns in the Bamboo view. The plugin will remember the column order the next time you start Eclipse.

The Atlassian IDE Plugin is available for IDEA too

Take a look at the [release notes](#) for the IDEA version of the plugin.

Don't have the Atlassian IDE Plugin for Eclipse yet?






Take a look at the features in the [Plugin User Guide](#). Then follow our easy [installation instructions](#).

This is an open source project. You can get the source code from [our SVN repository](#).

The plugin's blog

The plugin's team from time to time posts some info on the plugin's [blog](#)

Complete List of Fixes in the Atlassian IDE Plugin 0.1 for Eclipse

Jira Issues			
Key	Summary	Priority	Status
PLE-18	Separate the release notes for the IDEA and Eclipse versions of the plugin	↑	 Closed
PLE-17	Add setting bamboo polling time to the configuration	↑	 Closed
PLE-5	Add feature to remember bamboo tab columns width and order between Eclipse sessions	↑	 Closed
PLE-2	Eclipse: bamboo notification "toaster" popup	↑	 Closed
PLE-1	Allow to change columns order for bamboo tab	↑	 Closed